
STITCHES IN THE SAND



Volume 14, Number 7

April 2006

MEETING DATE: Thursday April 13, 2006
HAPPY (HALF) HOUR: 6:30 - 7:00 P.M.
BUSINESS: 7:00 - 9:30 P.M.
PLACE: Marco Forster Middle School



THE QUILTS OF THOSE WHO HELP YOU WITH YOURS MEMBER SHOWCASE

I don't know about you, but each year when we do member showcase, I get very excited. We are so blessed to have such a wonderful and talented group of members to choose from. This year I thought it would be fun to see the quilts of a few of the girls from Leah's and Material Possessions, our local quilt shops. We start in alphabetical order with:

Linda Ambrosini

Linda has worked for Leah's for 6 years. While starting to sew when she was only 12 years old out of necessity, due to being a "String Bean," Linda made most her clothes including her prom gowns in high school as well as in college. She then turned to smocking, where she enjoyed the creativity of hand work. She then moved to Orange County when her youngest was 5 and joined the smocking guild. Since she did not have anyone to smock for, she made the logical transition to Quilting! Linda so enjoys the artistic creativity that comes with quilting and only wishes she had more time to devote to the art. In working at Leah's she gets to help all of you pick fabric, therefore using your project and funds to fill her creativity needs. Linda teaches at Leah's and Material Possessions.

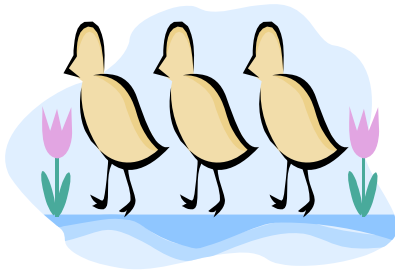
Veronica Dibble

Veronica has lived in Orange County most of her life. She is married with a son and daughter and 4 granddaughters. Most of her work experience has been in retail and boutiques which eventually led to her work with "Between Friends" country store in Laguna Hills Mall. When the store closed in 2000 Veronica was ready for a new adventure. "I'd always wanted to learn to quilt!" So with her partners from Between Friends, Delane Turner and Linda Payne (both members of our guild), she took classes at Material Possessions and thus began her quilting "career." She lives a mere 1 ½ miles from Material Possessions and joined the staff there in 2001. Her goal is to learn as much as possible from both the girls at the store AND the customers.

Jennifer Morgan

Jennifer has been sewing for most of her life. She learned to use the sewing machine *at a very young age*, and made her own clothes in high school. This somehow lead to quilting. Jennifer thinks of herself as a traditional quilter, and enjoys piecing the best, with hand appliqué a close second. She works at Leah's and enjoys teaching as Leah's, and Material Possessions. Jennifer, as you know, is the designer of our **STRIKING** Opportunity Quilt for this years Show. *Psst*, I've heard rumors that she is gong to make the pattern available for purchase.

From the President's Desk



It is exciting seeing all the efforts for the Quilt Show coming together. Since our last show we have over 150 new members, and this will be their first show. The Beach Cities Quilters Guild show has a reputation of high quality quilts and wearables with a wide range of styles. For a successful show, there are 30 or more members working issues such as vendors, advertising, the opportunity quilt ticket sales, and layout. When it comes down to the last two days, several hundred will be needed to set up and take down and man the show. I hope you have all signed up for the various positions. My favorite job is white gloving; where you show the backs of quilts to people, encourage our visitors to explore and help answer quilting questions. Set up and Take down can use family help also, meaning your husbands or teenage children. Sometimes at 50 plus the ladders can be daunting. I know everyone will be as proud as I am whenever our guild sets about a task. There are so many creative members that I am inspired every time we have a show.

A friend of mine is dealing with health issues with both her parents. After a day at work and trips to the hospital there isn't an ounce of energy left for quilting and certainly nothing of the creative spirit stirring. Since my friend is not local, I feel helpless to comfort her. Our telephone calls are a happy and care free moment in her day. The other day she went in and petted her fabrics. The mere touch was enough to bring a bit of calm to a very hectic time. I know many of our members are also dealing with similar issues. Please extend your spirit and help where possible for our members who are in these trying times.

Sheryl



QUILT SHOW ITEMS – DUE DATES

All items being displayed in the quilt show will have to be turned in at **Leah's-Mission Viejo** store on one of the following dates. If you have an item that is to be professionally evaluated, please plan to turn it in on Tuesday, May 23rd or Thursday, May 25th.

You must pick up the envelope with the labels and bagging instructions and a **required, provided** plastic bag at the April/May Guild meetings or arrange for a friend to pick them up for you.

We will NOT accept any items at the April or May Guild meetings!

Tuesday	May 23	10 AM to 12 Noon - regular and evaluated items
Thursday	May 25	5 PM to 7 PM - regular and evaluated items
Tuesday	June 1	12 Noon to 2 PM or 4 PM to 6 PM - FINAL TURN-IN

Becky Reed and Diane Collins
The Acquisitions Team

QUILT SHOW 2006 JUNE 3 AND 4

Our big show is about to begin and we still have lots of work to do! More importantly, we need your HELP! We have many committees that will need assistance such as **set-up/take-down/ white gloves/food/ticket sales, opportunity quilt tickets**, just to name a few. We have a commitment to have the “best show in town,” and we cannot even begin to do that without your help.

Along with committees which will need people, we need to ask that each member sell tickets for the opportunity quilt and tickets for entrance into the show. Do not forget that those entrance tickets are on sale right now for \$5 each, but after the May meeting they will be \$7.

Kathy and I consider it an honor to chair this event. Please do your part to insure that we truly are the best Guild anywhere!!

Kathy Stolhand
Marsha Burns



HERE IS AN OPPORTUNITY FOR YOU!

It is time to put a major effort into selling opportunity quilt tickets! For your efforts we will give you raffle tickets with the promise that if you are a winner, a wonderful basket of fabric (our favorite thing) and other goodies will be yours!

Rules: \$10 worth of tickets sold....one raffle ticket
 \$25 sold.....two raffle tickets

Suzanne will be sitting next to the balloons in the front of the room, so bring her your tickets!
If you need tickets, call Suzanne Skinner.



WHITE GLOVES

Our Quilt Show is coming upon us soon and I need your assistance with White Gloving. I will be at the guild meetings in April and May taking sign-ups for volunteers. I need volunteers to work 2-hour shifts from 10 AM to NOON, NOON to 2 PM, and 2 PM to 4 PM each day. I will have a few sitting jobs, but most will require standing and walking. The duties include showing our guests the backs of the quilts along with telling them anything you may know about the quilt or quilter. It's a lot of fun and a great way to meet other quilters.

You can also call or e-mail me to sign up. Be sure to let me know which day and which two-hour time slot you'd prefer. I'll get back to you to confirm your request.

Janice Elliot

Making a Sleeve for Hanging Your Quilt

1. Measure the width of the quilt between the bindings but not including them.
2. Cut a strip of fabric 6-9" wide by this length. If the length requires two strips, join the strips with a 1/4" seam allowance; press seam allowances to one side.
3. Hem the short ends of the strip by folding under 1/2", pressing, then folding and pressing once more. Topstitch close to the edge of the hem.
4. Fold the sleeve in half lengthwise, wrong sides together and press.
5. Bring each cut edge to the center fold and press. These two folds are your sewing guides so press them crisply.
6. Unfold and, wrong sides together, sew the length of the sleeve with a 1/4" seam allowance. Press this seam open very carefully so that the crisply pressed folds are not ironed out.
7. With the seam allowance against the lining, center the sleeve and pin the top fold just below the binding.
8. Smooth the sleeve against the lining and pin at the bottom fold.
9. Using thread to match, blindstitch along both folds and ends of sleeve. To reduce the pull on the lining, catch some of the batting in the stitches but not the front of the quilt

GOING ONCE, GOING TWICE.....SOLD!!!

FantaSea of Quilts - Quilt Auction on Saturday, June 3rd at 1:00PM

BCQG has had a quilt auction the last several quilt shows and it is a very popular event, both with members and guests, but to go forward with this fun money-making auction we need your participation. We need your donations of Quilts (any size), Dolls, Garments and Personal Accessories to help make this a successful affair.

The quilt show and auction are the Guilds major fundraiser and the profits not only continue to fund the Beach Cities Quilters Guilds for the following two years, but the money earned at the auction assists the Guild in providing National and Internationally known Speakers each month. The auction proceeds also help to keep the workshops fees at an affordable level when our famous speakers are charging 2 or 3 times that of what BCQG sets as workshop prices.

Please help us have the "Best Auction Ever" by bringing your donations to the April or May Guild Meetings. (Quilt Show Table)

You may also request the quilt item be picked up from your home.

Any Questions ... Please call:

Maggie Ezell

Pat Pardoen

Karen Kowalchuk



BYLAWS REVISIONS PASSED

Thanks to all of you attending the March meeting. The bylaws were approved as presented at the meeting and as published in the March newsletter. Many thanks to committee members Becky Reed, Nancy McBride, Janet Cook, Chaundra Gomer, and Julie Greenspan and alternates Polly Hada and Odette Ostanowski.



PHILANTHROPY

Your ongoing generosity of sharing your talent and time is so appreciated, and our inventory of quilts is plentiful for the first time this year. I only wish that each of you could be with us when we deliver your beautiful quilts to senior homes, soldiers convalescing at Camp Pendleton, children at Orangewood Children's Home, and those who are hospitalized. *It's the best part of the job.*

Remember those sweet bears that guild member Sharon Jaeger made? We delivered some to Orangewood recently. They have decided to give them to the police officers and/or social workers to hand to kids as they are brought into the home. Thank you Sharon.

Please stop by the Philanthropy table during a guild meeting and pick up a kit or attend one of working meetings at Leah's on the fourth Friday of the month (9:00 to Noon). Making a philanthropy quilt is a safe way to grow your skills and do something wonderful for your community.

The guild has been asked to make two lap quilts for the Ontogenesis Imperfecta Foundation (brittle bone disease) charity auction in October. They request we use their t-shirts and logo in the quilt. We ask someone to volunteer for this project. Maybe a friendship group would like to take this on. Please call Sally Gard if you are interested.

MONTHLY MINI

Titled: "Sitting Pretty"
Quilt Maker: Kathleen Walker
Quilt Winner: Barbara Chase

Kathleen took her first quilting class back in 1992 at Leah's when they were still in the mall. In 1997 she took her first appliqué class and has truly found her niche as a needle turn appliqué artist. She is an admitted fabriholic and is forced to quilt to keep her stash down. Kathleen joined the quilt guild in 2003 and, through the guild, has made many friendships which are an important part of her life. "Sitting Pretty" is a beautifully hand appliquéed quilt which is machine quilted.

Maxine McLachlan
Linda Ambrosini

SECRET SISTERS

A huge thanks to Nancy Ota for teaching secret sisters her Screen Play tote bag! We had a wonderful time!

Keep an eye out for the mail, as we will soon be sending out information regarding the secret sister block exchange. There will also be several sew-ins to help get those blocks made.

Thanks to everyone for their participation.

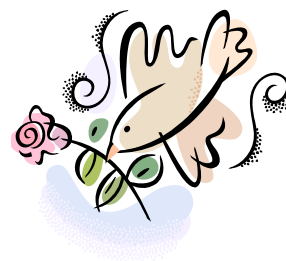
Renate and Megan

FRIENDSHIP CIRCLES

Friendship groups are a wonderful way to make new friends who share the wonderful craft of quilting. Friendship groups offer different things to different people. Some of us enjoy getting together and sharing about our families and what is going on in our lives; some like to spend their time together sewing, learning new techniques and doing group projects, and others like to hit the quilt shows and shops. No matter what your preference is, friendship groups form bonds and lasting friendships. If you wish to be part of a friendship group, please stop by and see us at our table in April. We will try to place you in an existing group or try to form a new one.

Karen Richesin
Alicia Passarelli

WORKSHOPS



April Member Workshops (Please note the dates are after Easter)

Friday, April 21 10am - 4 pm

Moore's

Cheryl Carrera: "Hand Appliqué"

Cost: \$10

Your appliqué skills will soar when you learn the freezer paper method of appliqué to make this gently curved floral design. Come and have fun with Cheryl and make a gorgeous wall hanging.

Saturday, April 22 10am - 4 pm

Tall Mouse

Bonnie Spicer: "Machine Quilting"

Cost: \$10

Learn the techniques on your home sewing machine from a master who has won numerous awards for her lovely quilts. Bonnie will discuss needles, threads, batting, and marking and have us on our way to beautiful machine quilting.

These member workshops are a bargain at only \$10. We have such talent at Beach Cities!

May Workshop – Phil Beaver

Presenting: Sunflowers & Poinsettias

Friday and Saturday, May 12 and 13 10am– 4pm

Monday and Tuesday, May 15 and 16 10am– 4pm

Leah's Quilt Shop, Mission Viejo

Cost: \$60 each plus \$40 for kit (we will be collecting for the kit together with the workshop charge)

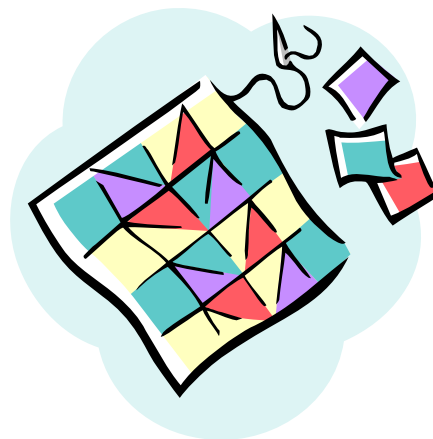
Phil Beaver teaches his quilting and fabric painting technique all over the United States and Canada. All of us have seen and been somewhere exposed to Phil's work, whether through quilt show where he is consistently a winner of many awards or his appearances on HGTV's Simply Quilts and cable's DIY channel. His work and quilting accomplishments have been featured in over 50 related magazine publications.

So join us in these two 2-day adventures in fabric painting and then using this fabric to make wonderful flower quilts and wall hangings.

For more information, see Phil's website at <http://www.philbeaver.com/>

A PEEK AT FUTURE PROGRAMS

June	Nancy Odom
July	Sharon Schamber
August	Patricia Lei Murray
September	Cindy Brick
October	President's Quilt
November	Katie Pasquini Masopust

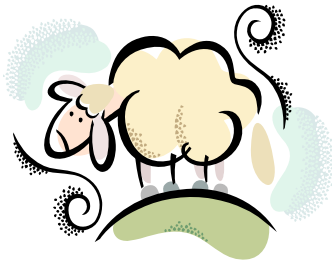


HOSPITALITY

Thanks to the ScrapBaggers Friendship group for hosting the table for March. The shamrock table cover and vase of freesias came from our very own Sheryl Smith-Bailey. Diane Collins brought the watering can with floral accents, and Sandy Corbin of last year's block party shared her March green and black table runner to spark up the whole works! Best of all, in addition to all of the goodies that so many members brought (in addition to those hosting the table), was the wonderful smile and cheerful voice of Alexie Kouzelos who invited all to partake and enjoy! Thanks again to all and especially to those who just volunteered out of the blue to help carry in supplies before the meeting started!

We have Stitchers of the Night signed up for April, and a brand-spanking new friendship group is deciding between June or July. So some of the rest of you, how about helping us out with the May table? All you need to do is greet your fellow members and keep items tidy. Give it a shot! It's a kick!

And a gentle reminder, please bring goodies in disposable containers. The boxes of girl scout cookies were great, but we had to scurry a bit to plate them.



BLOCK PARTY

Hello everyone. Thanks to all you wonderful ladies for working so hard on the March blocks. We had a super total of 90 blocks turned in. Our lucky winners were: Veronica Dibble, Deborra Singletary, Ruth Nahas, Tara Hilde, Kathy Stewart, Janet Pugh, Marianne Cunningham, Helen Brassaw and Delane Turner. The April block is really pretty and easy, so we hope to hit 100 blocks. That would be wonderful!

Janet and Mary



Birthdays

Flower: Sweet Pea

Birthstone: Diamond

Monika Grant	1
Priscilla Hackbarth	1
Debbi Kulick	1
Suzanne Butsko	2
Ruth Morton	3
Tari Filipoff	4
Donna McDonald	4
April Lee	5
Hiroko Moriwaki	7
Celeste Duff	8
Debbie Radwan	8
Susan Barker Basanda	9
Sandy Hoyal	9
Sylvia Pixley	9
Beverly Remillard	9
Laurie Sageser	9
Lily Shearer	9
Renee Cox	10
Fran Connelly	12
Joyce Pinderski	12
Cynthia Croucher	13
Judy Yamazaki	13
Marjorie Johnson	14
Carol Christensen	15
Tara Hilde	15
Stephanie Williams	15
Jane Salem	17
Wendy Eames	19
Kerry Joho	21
Linda Payne	23
Linda Campos	24
Melinda Smith	24
Carolyn Ellis	25
Jill Moen	25
Pat Gates	27
Candy Crain	28
Rachael Severance	28
Helene Moser	30
Maggie Thompson	30

MEMBERSHIP

March Attendance: 271
Members: 254
New Members: 8
Guests: 7
Advertiser: 1
Speaker: 1



There are currently 530 Active members and 7 Newsletter subscribers.

Welcome to new members who have joined since the February meeting: Carol Jaap, Beth Kahn, Claudia Mutialu, Rhonda Nelson, Emily Pugmire, Cindy Shilvock, and Kristin Smith. A very special welcome to our new young members Holly Nelson (age 10) and Kelsey Patch (age 11).

All members are reminded to check in at the Membership table before the meetings. This gives us an accurate count for attendance and helps us plan the appropriate number of chairs for the meetings.

Please remember to wear your name badge at all meetings. It's a great way for new and existing members to get acquainted! (A fine of \$0.25 is payable if it is not worn.) New members are expected to have a badge made within three months of joining the Guild.

2005-2006 membership cards and directories are ready and will continue to be distributed at meetings. Please have a friend get yours if you are unable to attend.

Thanks to Linda Martinez, Laverne Armour and Kris Smith for their help at the Membership table.

Janet Cowart



SUNSHINE AND SHADOW

Get Well Wishes have been sent to Susan Stemporzewski who has had a very difficult winter in Massachusetts dealing with the surgeries of both her mother and father and now is on a leave of absence from work due to her own illness. The guild's comforting thoughts have been sent to Bette Blauser, Pat Pardoen, and LeAnn Goettel on the hospitalization of their mothers.

We hosted our second "Meet and Greet" for new members March 23 at Jan Hirth's house.

Little Seeds

Little seeds we sow in spring
growing while the robins sing,
give us carrots, peas and beans,
tomatoes, pumpkins, squash and
greens.

And we pick them,
one and all,
through the summer,
through the fall,
Winter comes, then spring, and
then little seeds we sow again.

Else Holmelund Minarik



NICKLE CLUB

Thanks for stopping by the Nickel Club table on Guild night! The object of the Nickel Club is to collect as many different fabrics as possible, and we do this by swapping 5" squares each month. Your participation is welcome and necessary in order to have a good variety of nickel squares for exchange. We hope you'll be working on your nickel projects so that you can join us in a group Show and Tell at our October meeting. Another workshop is planned for after Easter. The date and time will be announced later. Questions??? Call Delane Turner, Veronica Dibble or Jennifer Morgan.

Here is a list of the remaining Nickel Club monthly fabric selections for the 2005/2006 BCQG Year.

Monthly Fabric Selections 2005/2006

April: Batiks and/or 3 Sisters/Robyn Pandolph types
June: 1800's and/or Stripes & plaids
Aug: 30's and/or Black & whites
May: 30's and/or Mini small florals
July: Batiks and/or Thimbleberries
Sept: 1800's and/or Laurel Burch

DOOR PRIZES

FEBRUARY

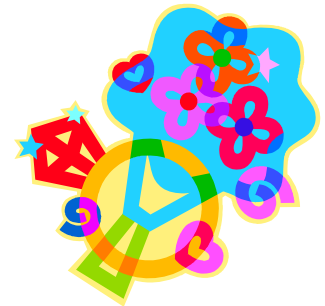
Trish Henderson - Glow in the Dark pins - Moore's
Dorothy Jarr - Polka Dot Kids Quilts - book - Moore's
Linda Shumway - Building Blocks - kit - Moore's
Keri Bright - Building Blocks - Mardi Gras - Moore's
Ida Mae Monroe - Fat Quarters - Thimbleberries - Leah's
Sue Haw - Fat Quarters - Moda - Leah's
Carole Bassett - Moda Faded Memories - Tall Mouse
Glenda Britten - 10 Fat Quarters - Tall Mouse
P. Jaffe - \$25 Gift Cert. - Tall Mouse
Martha Hirlburt - \$15 Gift Cert. - Tall Mouse
Penny Dicaro - \$10 - Gift Cert. - Flying Geese
Cheri Mc Dowell - \$10 Gift Cert. - Flying Geese
Andrea Cook - \$15 Gift Cert. - Material Possessions
Theresa Culver - Fat Quarter Set - Material Possessions
Jhone Hardesty - Fat Quarter Set - Material Possessions
Julie Montoya - Pattern - Java House

MARCH

Patti Seefold - \$10 Gift Cert. - Flying Geese
Ellen Campbell - Fat Quarters - thread - project bag - Rosie's
Stephanie Williams - Fat Quarter set - Leah's
Bonnie Cornish - Fat Quarter set - Leah's
Shirl Benda - Fat Quarter Set - Moore's
Johanna Gibson - Fat Quarter Set - Moore's
Betty Koskinen - Fat Quarter set - Moore's
Diana Morgan - \$15 Gift Cert. - Bear's
Paula Pangle - \$15 Gift Cert. - Bear's
Julie Montoya - Gift Cert. - Material Possessions
Marlene Cunningham - Fat Quarter set - Material Possessions
Marla Entwistle - Fat Quarter set - Material Possessions
Julia Maben - \$10 Gift Cert - Flying Geese

SHOW AND TELL

Sally Gard : "Some Assembly Required"
Nancy Gasparotti: "Flower Power"
Bette Bradley: "Joy's Reject"
Helen Brassaw: "Little Red Basket" and A Stitch and Split quilt top
Odette Osantowski: "Fields of Love"
Sheryl Smith-Bailey: Untitled- Scrapbaggers dot exchange, donated to the auction
Paula Pangle: "Water Garden" a shadow chenille jacket
Grace Errea: Three thread drawings; two untitled and one of her daughter, Lauren
Marianne Cunningham: "I Can't Believe I Did the Whole Thing!" and 2 table runners, a table pad, and a wall hanging with February's Block of the Month Baskets
Debbie Loveridge: "An Irish Daisy Chain"



Places to Go, Quilts to See . . .

- April 4-9** The Traveling Quilters are off to the International Quilt Festival in Chicago . Join us as we visit the quilt festival, the windy city, and sights in and around Chicago . For information contact: pamover-ton@earthlink.net
- April 22-23** African American Quilters of Los Angeles, 20th Anniversary Quilt Show, "The Look and Feel of Tradition – from Raw Cotton to Quilts". Featuring a display of award winning quilts by children. Carson Community Center, 3 Civic Plaza Drive, Carson, Ca . Saturday 10 – 4, Sunday 10:30 to 4:30. For more info call (310) 538-4229.
- April 29-30** Camarillo Quilters Association is having their Quilt Show . Check www.camarilloquilters.org for more details.
- May 7-11** QUILTERS' ESCAPE 2006 An annual quilting seminar/retreat on the California North Coast in the redwoods overlooking the Eel River and in the Victorian village of Ferndale. 2006 national instructors are: ESTERITA AUSTIN, CYNTHIA ENGLAND, SALLY COLLINS, CHARLOTTE ANGOTTI, NANCY PRINCE, SHARYN CRAIG and JANET JONES WORLEY. Please send SASE to QUILTERS' ESCAPE, 3414 K Street, Eureka, CA 95503 ph 707 442-0081 or visit www.quiltersescape.com for detailed information.
- May 13-14** Beauty of Tradition III will take place at the Santa Maria Fairpark in Santa Maria, California - Contact: Sandy Turner, E-mail NQASLT@aol.com
- May 13** Citrus Belt Quilt Guild Home Tour. 9 a.m. - 4 p.m. Tickets \$10/presale and \$15 on day of event. For more information visit citrusbeltquilters.org or rahs.org or e-mail redlandsquilt-show@yahoo.com
- May 20-21** Desert in Bloom Sponsored by Antelope Valley Quilt Association Antelope Valley Fairgrounds, Lilac Pavilion, 2551 W. Avenue H, Lancaster, CA. 200 quilts; Opportunity Quilt; Vendors; Food Quilt Auction with auctioneer, Saturday, 1:00 Drawings on Sunday at 3:00 for Opportunity Quilt & sewing machine donated by A-Quality Vac & Sew, Palmdale, CA Saturday 10-5, Sunday 10-4, \$7.00 daily, \$10.00 2-day pass, Husbands and Children under 12 Free, \$3.00 fairground parking, Exit H on Antelope Valley Freeway, Hwy. 14 Contact Sharon Ott, 661-285-8501, sott@sbcglobal.net, www.avqa.org
- June 3-4** The Beach Cities Quilters Guild will host its 2006 FantaSea of Quilts show June 3-4, 2006, from 10 a.m. – 4 p.m., at Saddleback College's Gymnasium in Mission Viejo, CA. The dynamic quilt show offers more than 400 displayed items, a merchant mall, an auction (Saturday) and an opportunity quilt drawing. Presale discount tickets through May 11: \$5, at the door: \$7. For information, please visit www.beachcitiesquilters.org.
- July 9-13** Going camping this summer? If you want to avoid bears and bugs why not try Camp Watch-A-Patcher? Camp Watch-A-Patcher, is sponsored by Orange County Quilters Guild and will take place at Concordia University, Irvine, California. You may begin downloading registration information on February 27, 2006. All of the great camp teachers and links to their websites may be found by going to: www.orangecountyquiltersguild.com and clicking on Camp Watch-A-Patcher.
- If you need more information please contact Claudia Redfern, Camp Director, by phone at (949) 499-1267 or by email at redfernlaguna@earthlink.net. Stay in dorm rooms, sew all night, sleep late (or not) and have a wonderful time quilting with old and new friends. Call your friendship group and make it a field trip!